



Local Land
Services
Riverina

Saving Our Swift Parrots and Threatened Woodland Species

9th May 2017

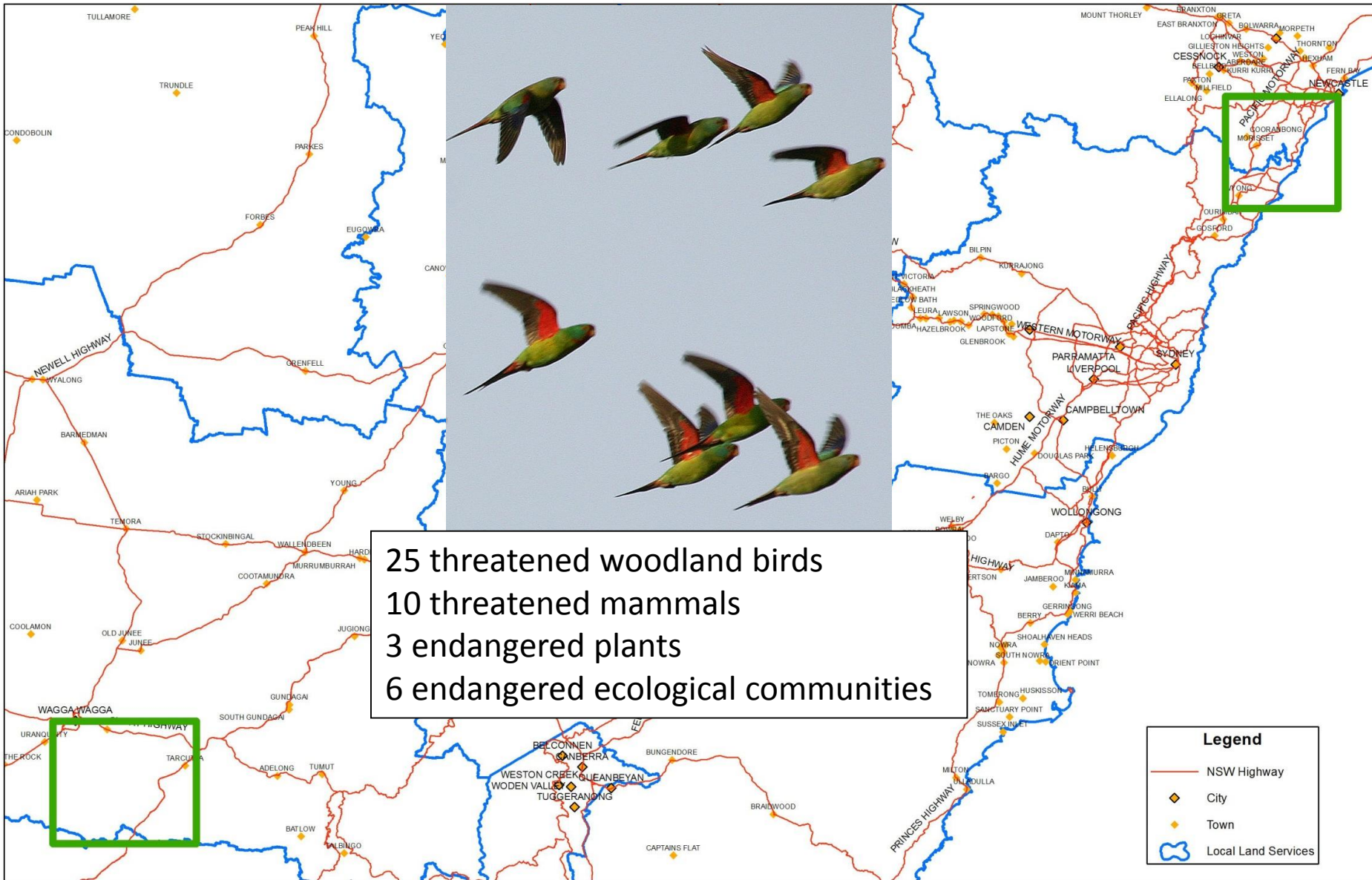
Presenter: Leanna Moerkerken

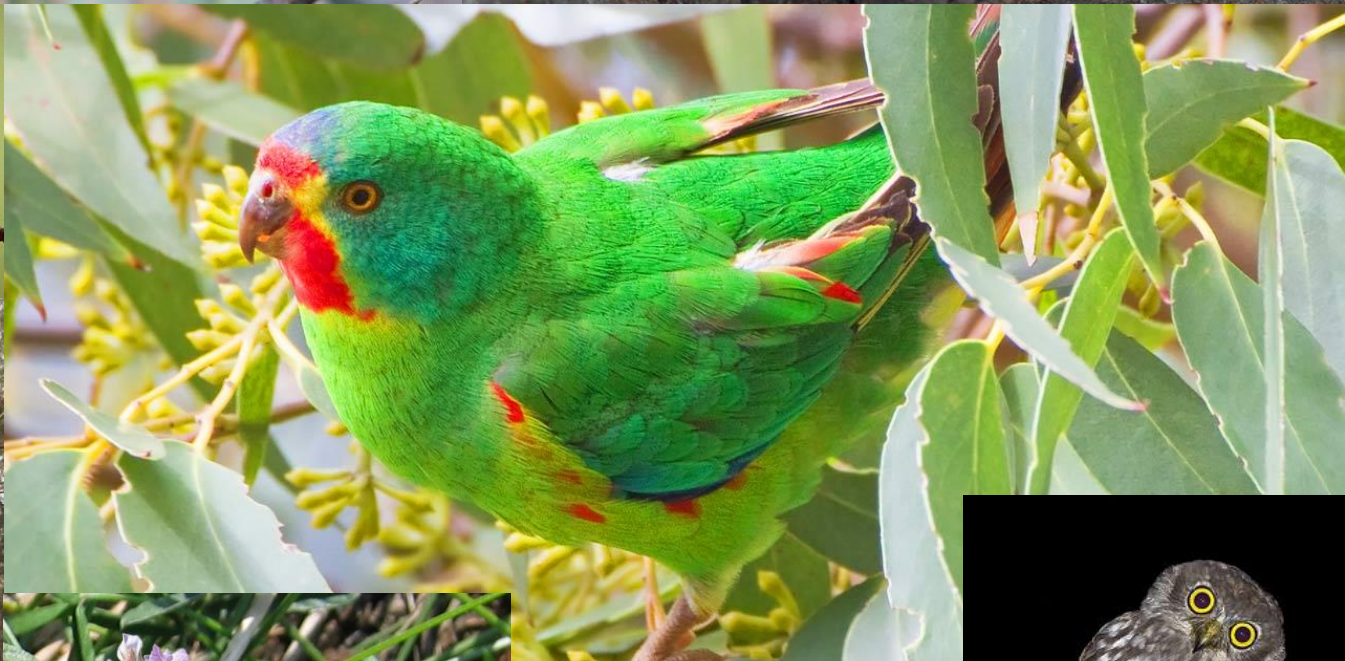


Improve the long term viability of the nationally endangered swift parrot in NSW and co-occurring threatened woodland species.

© G J Satherley

Saving Our Swift Parrots Project Range





Collaborative Partnerships



Australian National University



Local Land Services



Office of Environment & Heritage





Australian National University

10 year project
\$1million in cash
\$3million in kind

Project Manager

Steering Committee

Priority Region Managers

Threatened Species Advisory Board

Project Implementation and Research Coordinator

Riverina LLS

Greater Sydney LLS

NSW OEH

BirdLife Australia

National Swift Parrot Recovery Team

Riverina Implementation Team

Central Coast Implementation Team

Volunteer Bird Survey Network

ANU Climate Research Adviser

Murrumbidgee Landcare Inc.

Greening Australia

Bush Heritage Australia

Landholder Conservation Facilitator

Private and Public Landholders

Hunter LLS

Wyong Shire Council Landcare

Lake Macquarie City Council Landcare

Private and Public Landholders

Green Army

BirdLife Australia Volunteer Network

Private and Public Landholders

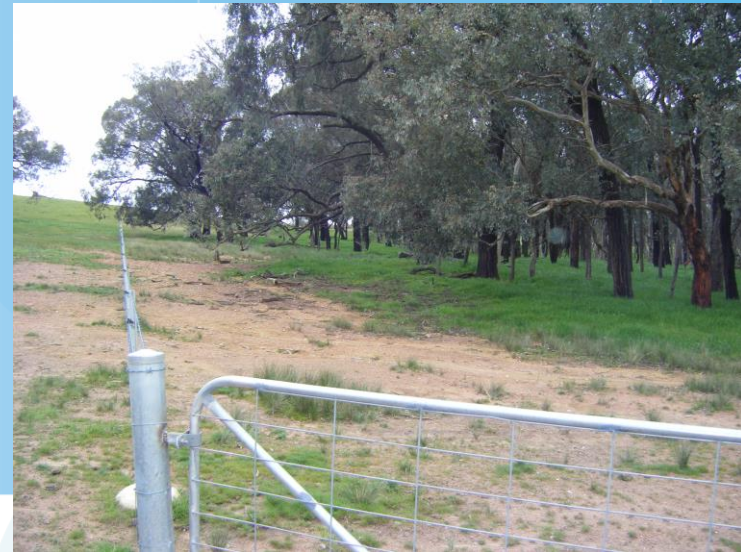
Community Groups

Green Army

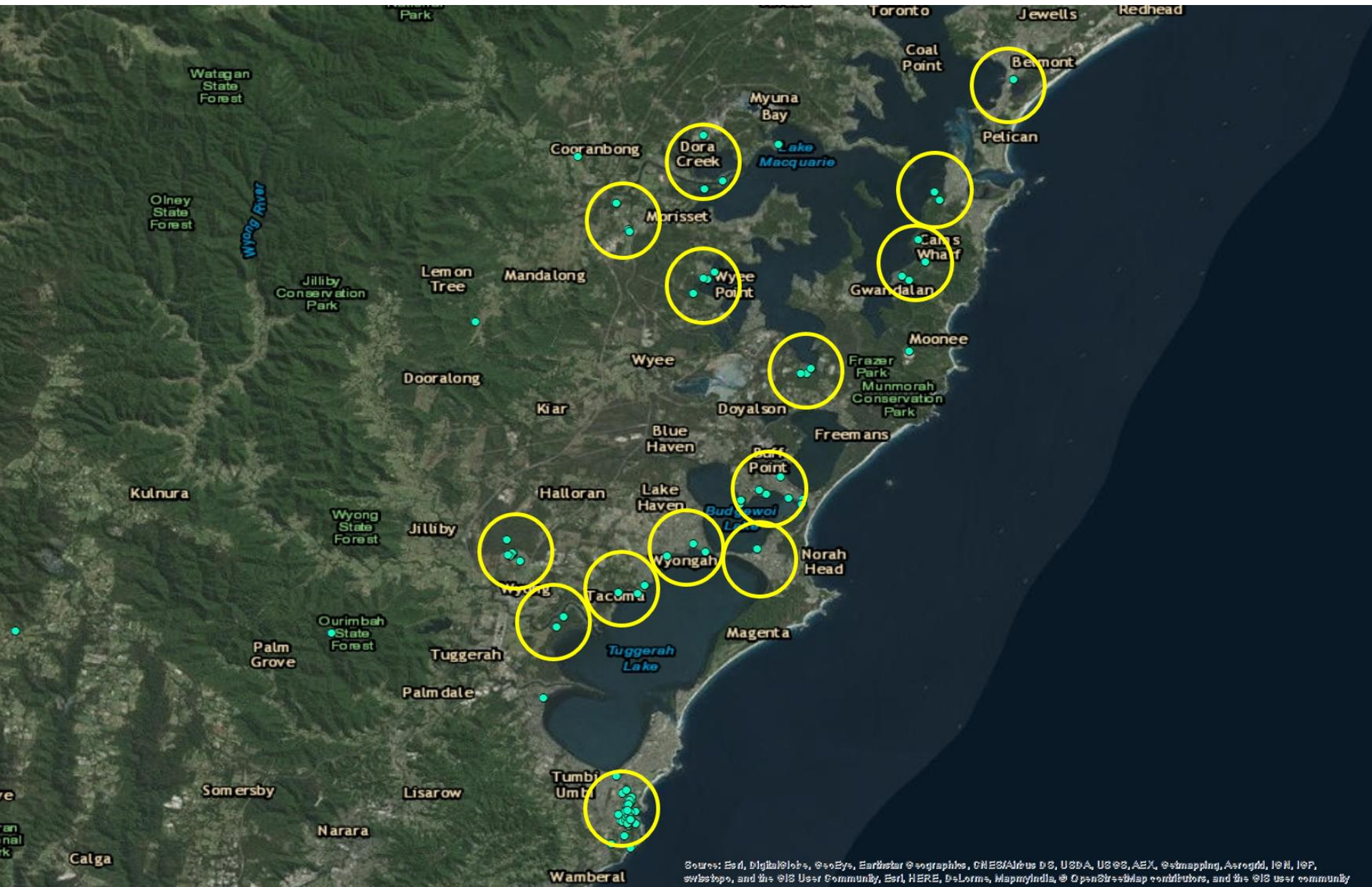
\$500,000

10 Years, 2 Regions, What Will We Do?

- Increase habitat quality and size by 800ha.
- Protect habitat with 24km of fencing.
- 8 community field days, with up to 240 attendees.
- 20 state-wide community bird surveys.
- Strategic climate change assessment and guidance for future management.

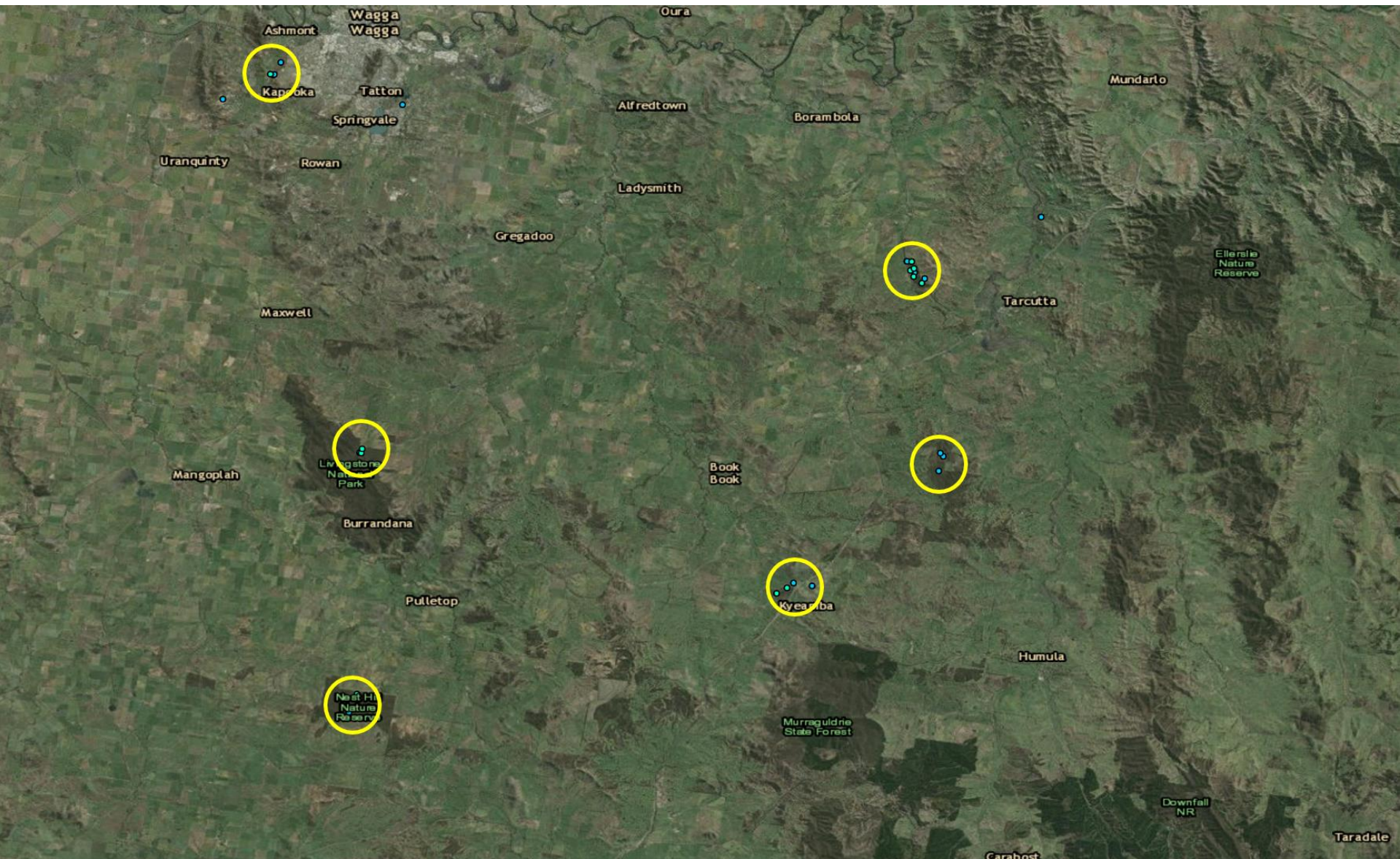


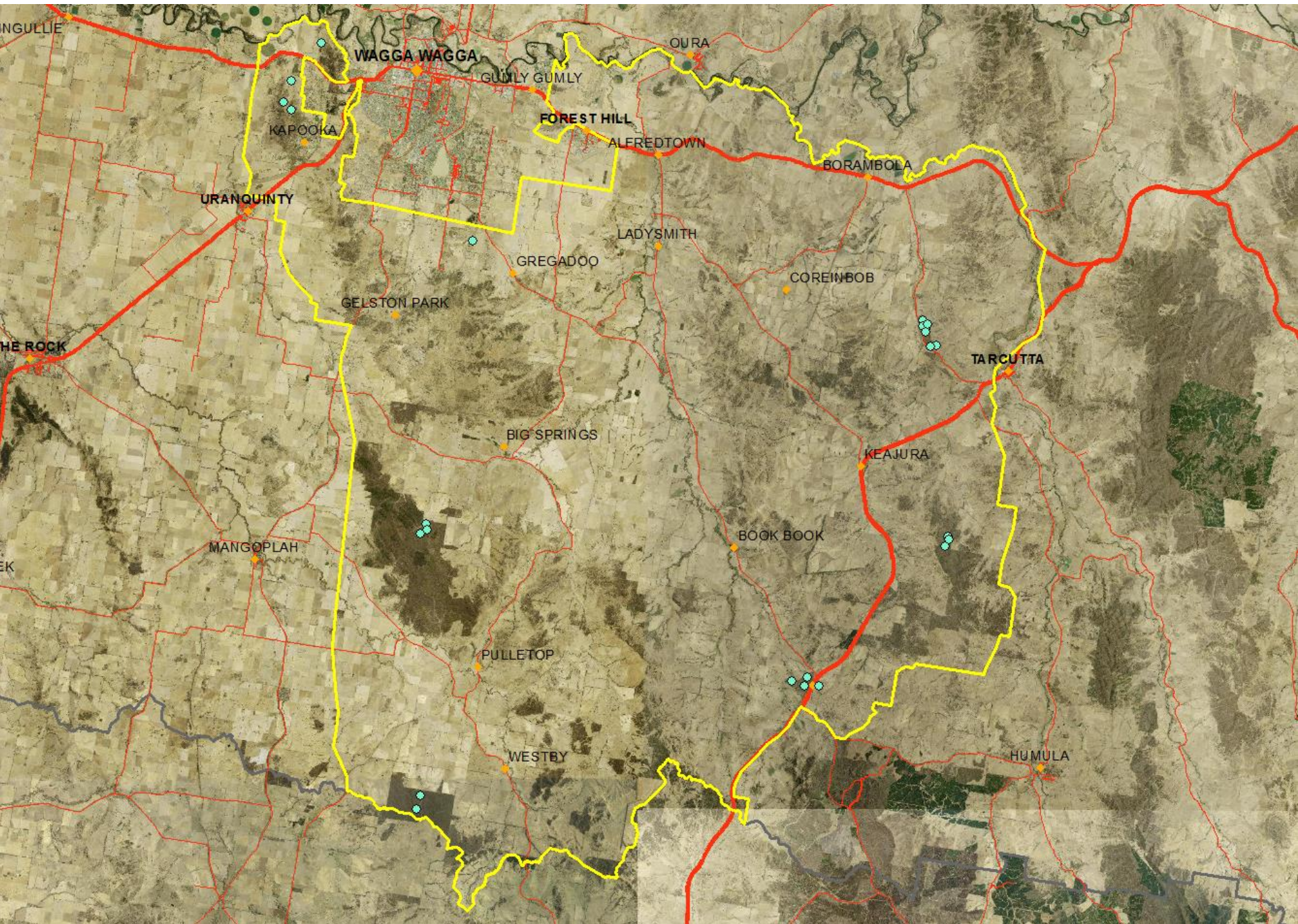
Central Coast Priority Region



Source: Esri, DigitalGlobe, GeoEye, Earthstar Geographics, CNES/Airbus DS, USDA, USGS, AeroX, @stmapping, Aergrid, IGN, IGP, Swisstopo, and the @OS User Community, Esri, HERE, DeLorme, MapmyIndia, @OpenStreetMap contributors, and the @OS user community

Riverina Priority Region





Next Steps To Save Swift Parrots

- 6 years of funding for habitat improvements.
- 10 years of species monitoring.
- A range of incentives are on offer to landholders.
- For more information contact Riverina LLS.

